

# TECHNICAL NOTES

## TRIMBLE BUSINESS CENTER SOFTWARE



### A POWERFUL GEOSPATIAL DATA OFFICE SOFTWARE SUITE

HARNESS THE POWER OF GEOSPATIAL DATA FAST. AS THE DESKTOP COMPONENT OF TRIMBLE'S SUITE OF GEOSPATIAL SOLUTIONS, TRIMBLE® BUSINESS CENTER SOFTWARE PROVIDES YOU WITH THE CAPABILITY TO EFFICIENTLY EDIT, PROCESS, AND ADJUST YOUR DATA WITH CONFIDENCE.

### WHAT IS TRIMBLE BUSINESS CENTER?

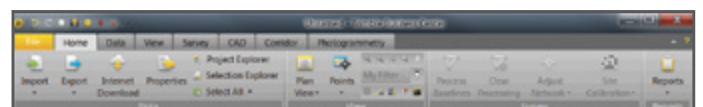
Trimble Business Center is a highly automated desktop application for processing and managing optical, GNSS, and imaging data. With unique capabilities, such as GNSS data processing, cross-section plotting and integrated photogrammetry functionality, Trimble Business Center enables geospatial professionals to bring their data straight from the field and begin working with it immediately to produce the deliverables they, or their clients, require. Likewise, users can quickly edit a design and send it to the field for layout.



### CUSTOMIZABLE USER INTERFACE

A CUSTOMIZABLE USER INTERFACE ENHANCES THE TRIMBLE BUSINESS CENTER EXPERIENCE. FOR USERS WHO WISH TO MAXIMIZE THEIR EFFICIENCY, THE TRIMBLE BUSINESS CENTER RIBBON INTERFACE MAKES FUNCTIONS EASY TO FIND AND UNDERSTAND.

- Add frequently used functions to the Quick Access Toolbar.
- Create ribbon tabs with streamlined workflows.
- Specify any website as the Start Page.



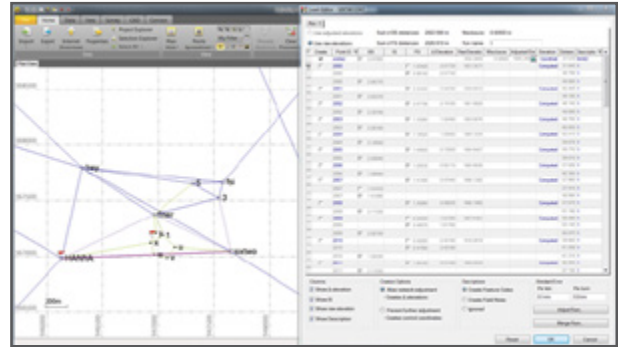
# SUPPORTED WORKFLOWS

TRIMBLE BUSINESS CENTER SUPPORTS A BROAD RANGE OF WORKFLOWS. ONE OFFICE SOFTWARE DOES IT ALL.

## CONTROL SURVEYING

CONFIDENTLY PRODUCE RELIABLE CONTROL COORDINATES FOR THE SPAN OF THE ENTIRE PROJECT.

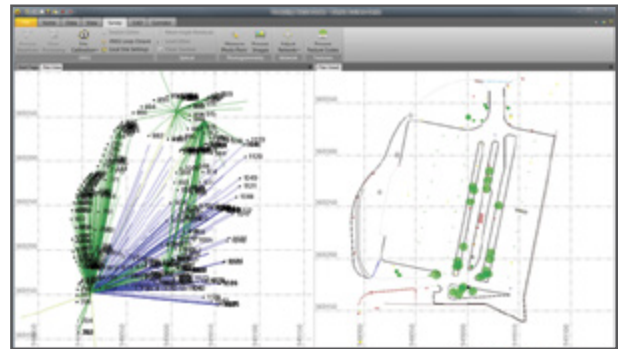
- Create projects with a wide selection of coordinate systems and geoid models.
- Postprocess static GNSS data with Trimble's HD-GNSS processing engine for more reliable positions.
- Review and edit total station observations and rounds.
- Seamlessly import and edit digital leveling observations from a Trimble DiNi® Digital Level.
- Adjust networks containing GNSS, total station, and leveling observations with least squares.



## FIELD TO FINISH

EASILY CREATE CAD-READY DELIVERABLES DIRECTLY FROM SURVEY DATA.

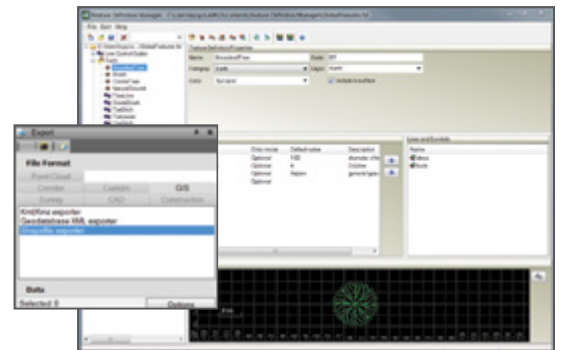
- Import topographic and as-built survey data collected with Trimble Access™ field software.
- Ensure the quality and reliability of RTK and total station observations.
- Process feature codes to automatically draw symbols and lines resulting in saved time.
- Create surfaces and contours from points and breaklines to accurately model terrain.
- Export to CAD file formats including SketchUp (.skp).



## GIS FEATURE COLLECTION

EXPAND THE UTILIZATION OF YOUR SURVEY SYSTEMS BY CREATING GIS DELIVERABLES FOR YOUR CLIENTS.

- Create and manage rich feature libraries.
- Collect points with feature codes and attributes using Trimble Access.
- Import Trimble Access jobs with collected feature data.
- Process feature codes to automatically draw point, line, and polygon features.
- Export features to a variety of file formats including Esri Shapefile and Geodatabase XML files.

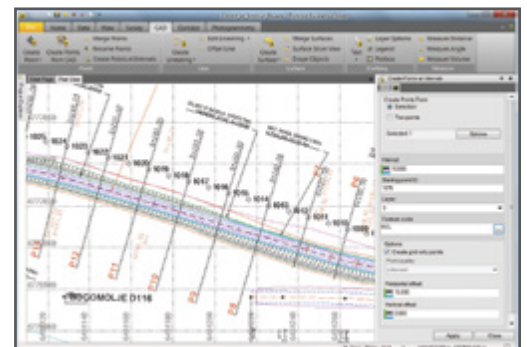


Define GIS features manually or by importing them from a Geodatabase XML file

## CONSTRUCTION STAKING

ENSURE THAT YOUR STAKING PROJECTS ARE PERFORMED CORRECTLY AND RECORDED FOR VERIFICATION.

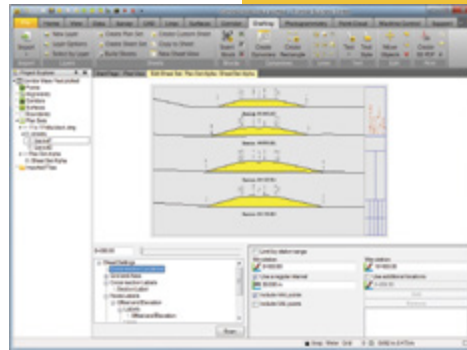
- Import road and site designs directly from CAD.
- Create points, lines, alignments, surfaces, and corridors to stake out with Trimble Access.
- Import as-staked data from Trimble Access for increased quality assurance.
- Archive staking jobs, including original field data for future reference and ease of mind.



# DRAFTING

REDUCE THE TIME REQUIRED TO GENERATE HIGH-QUALITY DELIVERABLES WITH THE OPTIONAL ADVANCED DRAFTING MODULE. THIS MODULE OFFERS SPECIALIZED WORKFLOW SUPPORT FOR GEOSPATIAL PROFESSIONALS WORKING ON ROAD, PIPELINE, AND RAILWAY CORRIDOR PROJECTS.

- Produce high-quality deliverables, such as geospatial maps.
- Automatically plot cross-sections for alignment-based surfaces or corridors.
- Create 3D PDFs of your models for easy communication and collaboration with project team members and clients.



# PHOTOGRAMMETRY

BASED ON STATE-OF-THE-ART TECHNOLOGY, TRIMBLE BUSINESS CENTER PHOTOGRAMMETRY FUNCTIONALITY MAKES IT POSSIBLE TO PROCESS COMPLETE MAPPING PROJECTS, INCLUDING AERIAL IMAGERY, GNSS AND TOTAL STATION OBSERVATIONS.



## TERRESTRIAL PHOTOGRAMMETRY

The Trimble V10 Imaging Rover extends geospatial workflows to capture 360-degree digital image panoramas for precise measurement of the surrounding environment. Eliminate rework by capturing everything in the field. Then, Trimble Business Center enables precise measurement back in the office.

- Create points, lines and polygons from photogrammetric images.
- Prepare rich deliverables for GIS, engineering, and survey applications, using images to tell the story.

## AERIAL PHOTOGRAMMETRY

With automatic aerial photogrammetry functionality, office surveyors will save time and increase value of deliverables for clients.

- Import and view imagery from Trimble Unmanned Aircraft Systems.
- Easily align aerial imagery with automatically generated tie-points and surveyed ground control points.
- Measure discrete points, such as building corners and edge of pavement, photogrammetrically using a "virtual telescope".
- Automatically create point clouds, ortho-rectified image mosaics, and raster DEMs from aerial images.

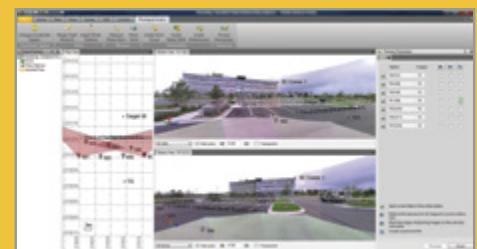


## TRIMBLE VISION: MEASURE WITH SPEED AND SAFETY

Combine visual information with field measurements and design data to obtain comprehensive, detailed data on project conditions and features. Using Trimble Business Center, geospatial professionals can document captured features by overlaying survey data on the captured panoramic images.

Trimble Business Center also enables the geospatial professional to make terrestrial photogrammetric observations and compute point coordinates using the Trimble VISION™ images. Points which were previously time-consuming, dangerous, or impossible to collect using other techniques can now be precisely measured using Trimble VISION photogrammetry capabilities in conjunction with Trimble Business Center.

Learn more about Trimble VISION technology at:  
<http://www.trimble.com/trimblevision>



# FLEXIBLE LICENSING OPTIONS

WHETHER YOUR BUSINESS REQUIRES A SINGLE LICENSE OR A MULTI-USER ENTERPRISE LICENSE, TRIMBLE BUSINESS CENTER OFFERS FLEXIBLE LICENSING OPTIONS TO MEET YOUR REQUIREMENTS.

- Scalable functionality for desired efficiency and budget
- USB hardware licenses for individual workstations
- Software code licenses for individual workstations and network servers

# A TRIMBLE BUSINESS CENTER EDITION MATCHED TO YOUR BUSINESS REQUIREMENTS

A COMPREHENSIVE AND SCALABLE TOOLSET FOR EVERY GEOSPATIAL BUSINESS.

- **Base Edition:** Supports quality-check workflows, network adjustment, reporting and L1 GPS processing.
- **Complete Edition:** Supports site calibration, full GNSS processing, and all workflows related to surfaces and images.
- **Advanced Edition:** Supports Trimble VISION technology and corridor workflows.
- **Aerial Photogrammetry Module:** Designed for working with Trimble UAS data.
- **Advanced Drafting Module:** Designed for automation in cross-section and land survey map generation plotting.



# SYSTEM RECOMMENDATIONS

## OPERATING SYSTEM

- Microsoft Windows® 7 (64-bit version)
- Microsoft Windows 8 (64-bit version)

## PROCESSOR

Recommended . . . . . Intel® Pentium® Dual-Core E2160  
(1.80 GHz, 1 MB L2 Cache, 800 FSB) or better

## RANDOM ACCESS MEMORY (RAM)

Minimum . . . . . 2 GB  
Recommended . . . . . 8 GB or greater

## HARD DISK

Recommended . . . . . 5 GB or more  
Graphics . . . . . DirectX 9 (or higher) compatible graphics card  
with 512 MB memory or more

Note: To display point cloud data (if applicable), graphics card must support Open GL 3.2

Monitor . . . . . 1280x1024 or higher resolution  
with 256 or more colors (at 96 DPI)

I/O Ports . . . . . USB 2.0 port

# SUPPORTED LANGUAGES

- Chinese Simplified
- Czech
- Dutch
- English US
- English UK
- Finnish
- French
- German
- Italian
- Japanese
- Korean
- Norwegian
- Portuguese
- Russian
- Spanish
- Swedish

## NORTH AMERICA

Trimble Navigation Limited  
10368 Westmoor Drive  
Westminster CO 80021  
USA

## EUROPE

Trimble Germany GmbH  
Am Prime Parc 11  
65479 Raunheim  
GERMANY  
+49-6142-2100-0 Phone  
+49-6142-2100-550 Fax

## ASIA-PACIFIC

Trimble Navigation  
Singapore Pty Limited  
80 Marine Parade Road  
#22-06, Parkway Parade  
Singapore 449269  
SINGAPORE  
+65-6348-2212 Phone  
+65-6348-2232 Fax

